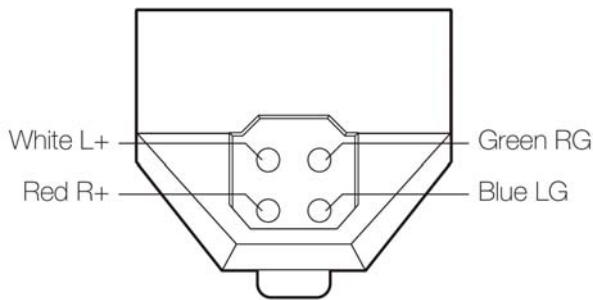


Fig. 2

Mounting the MM cartridge  
Remove stylus unit with stylus guard before working with leads and screws. Handle all parts carefully. (fig. 1-2)



Note colours and channel indications on rear side of the body for correct connection of the tone arm leads. (fig. 3)  
The packing contains a pair of screws with a thread length of 5 mm. The screws are to be used with headshell thicknesses of max. 3.5 mm. The MM threaded mounting plate has a thickness of 3 mm.

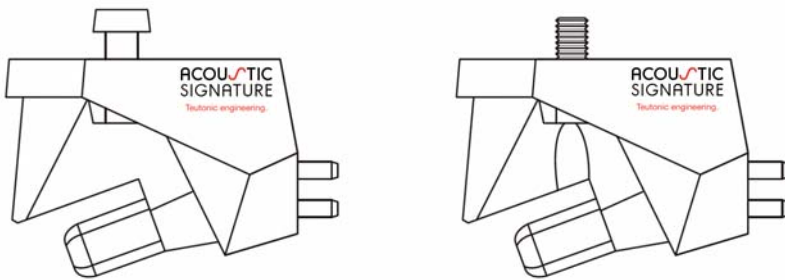
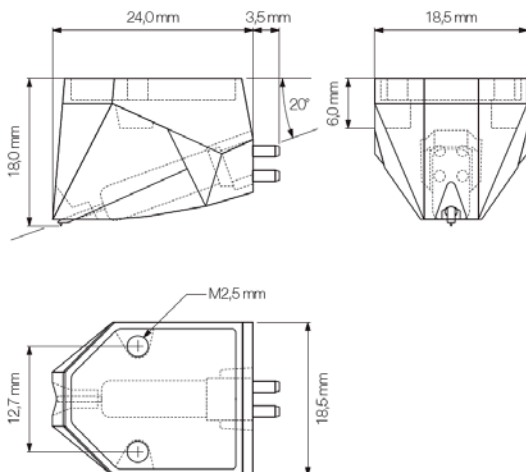


Fig. 4

To check that you are using the right length of screws – please observe that screws must not touch the body under the mounting plate – look into the small openings on each side of the body. (fig. 4)



Do not tighten screws completely before the stylus unit has been remounted (fig. 1) – to adjust stylus overhang refer to the record player or tone arm manual and cartridge dimensions. (fig. 5)

Never overtighten screws and never use aluminium screws, as they can get stuck in the threaded holes of the mounting plate. Note: If excessively long screws are used and are pressing against the body material, this may influence channel separation and could damage the cartridge body. In case of such damage the warranty will be void.

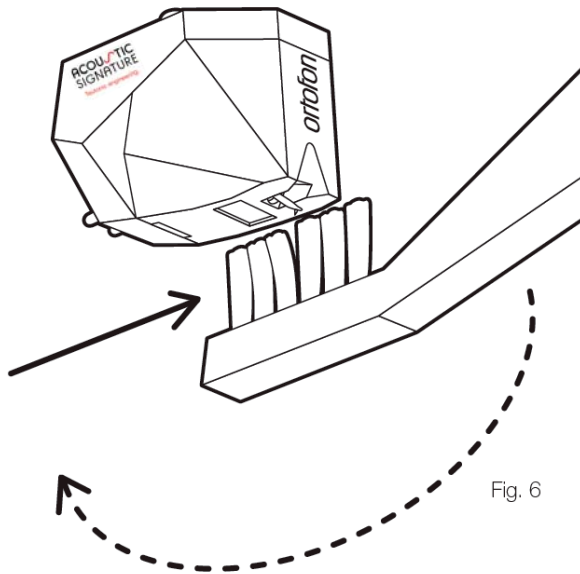


Fig. 6

### Stylus care and maintenance

To obtain optimal sound reproduction, remove dust from stylus regularly by using a small brush.

If the headshell can be easily removed from the tone arm, we recommend that you turn the diamond upwards and brush gently forward in the direction of the diamond tip along the cantilever.

We do not recommend the use of propyl alcohol (or other cleaning fluids) for cleaning the cartridge, as the diamond cement as well as the suspension system could be seriously damaged and thereby ruin the cartridge.

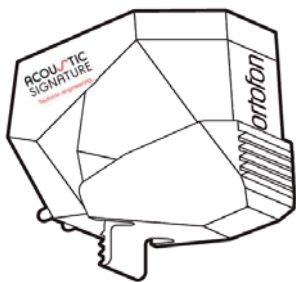


Fig. 7

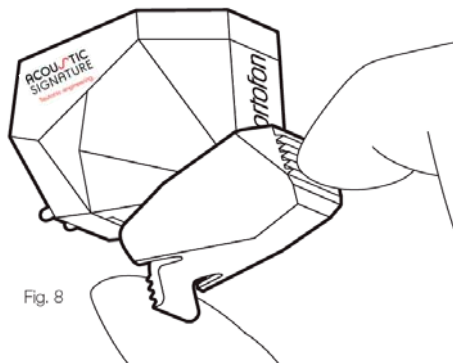


Fig. 8

### Stylus guard

Remove the stylus guard before use by holding at the front and rear of the guard and gently pressing the rear while tilting it downwards. (fig. 7-8)

## Technical Data



MM1



MM2



MM3

Output voltage at 1 kHz, 5cm/sec.	5,5 mV	5,5 mV	5 mV
Frequency range at -3 dB	20-20.000 Hz	20-25.000 Hz	Hz 20-31.000 Hz
Tracking ability at 315 Hz at recommended tracking force	70 µm	80 µm	80 µm
Compliance, dynamic, lateral	20 µm/mN	20 µm/mN	22 µm/mN
Stylus type	Elliptical	Nude Elliptical	Nude Shibata
Tracking force recommended*	1,8 g(18 mN)	1,8 g(18 mN)	1,5 g (15 mN)
Load resistance*	47 kOhm	47 kOhm	47 kOhm
Load capacitance*	150-300 pF	150-300 pF	150-300 pF

\*Recommended